

MADE IN KOREA

BIO TECHNOLOGY
boditech

Sensible solution for your patient



www.boditech.co.kr

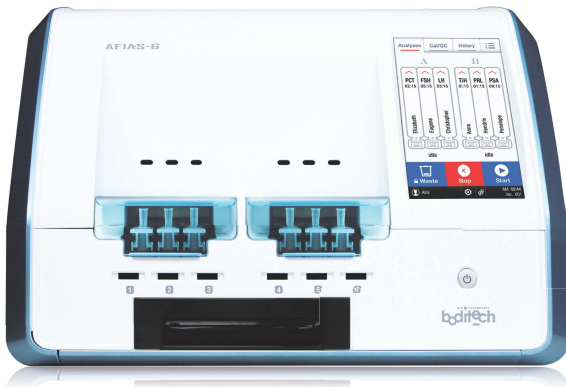
AFIAS

AFIAS-6

Versatile Desktop Immuno-Analyzer

Automated desktop analyzer

- 10 μ L, 30 μ L, 50 μ L finger-prick blood
- 6 different tests on 6 different channels
- Bay random access (2 bays)



All-in-one cartridge format
Just load sample & press start



Specifications

QC/Calibration

2 calibrators & 2 controls
Internal & external controls

Interface

7" touch screen
Built-in thermal printer
RS 232/USB port/Ethernet/SD card slot
LIS/HIS compatible

Memory

5,000 patient results
5,000 QC results
500 ID chips
100 User IDs

Throughput

Up to 36 tests/hour

Analyzer

420 x 336 x 293 mm
15.1 kgs
100 - 240V AC, 50-60Hz
Internal temperature control

AFIAS-1

Doctor's reliable associate

Automated desktop analyzer

- 1 channel
- LIS/HIS connectivity
- All-in-one cartridge
- 10 μ L, 30 μ L, 50 μ L finger-prick blood
- Walk away function



Specifications

QC/Calibration

2 calibrators & 2 controls
Internal & external controls available

Interface

5" touch screen
Built-in thermal printer
RS 232/USB port/Ethernet/SD card slot
LIS/HIS compatible

Memory

5,000 patient results
5,000 QC results
500 ID chips
100 User IDs

Throughput

Up to 10 tests/hour

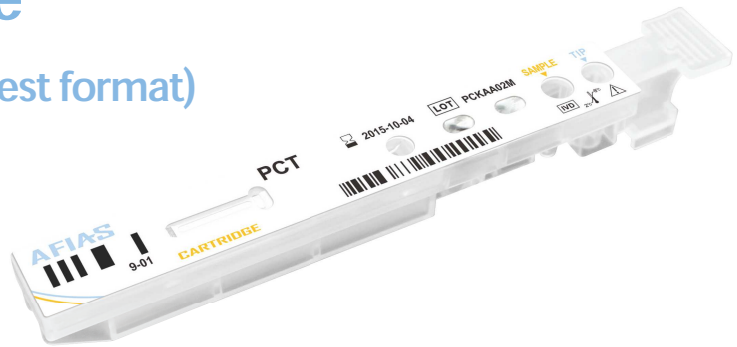
Analyzer

320 x 204 x 180 mm
3.9 kgs
100 - 240V AC, 50-60Hz
Internal temperature control

• All-in-One Cartridge

Ready-to-use reagent (single test format)

- Storage** 2 – 8°C for 20 months
- Sample type** Serum/plasma/whole blood
- Packing unit** 24 tests/Kit
- Test time** 3 – 15 min/each



• Can use whole blood, Finger prick or Venous

10 µL, 30 µL, 50 µL whole blood

- No syringes
- No collection tube
- No pipettes
- No centrifuge

Flexibility of using C-tip™ as well as regular tube blood.



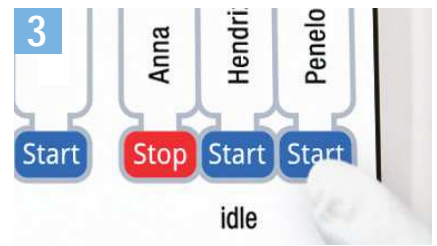
3 simple steps



Step 1: Collect blood

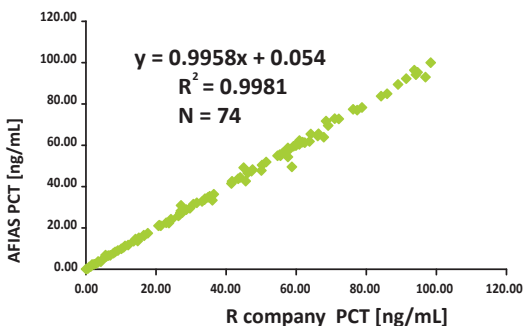


Step 2: Place the C-tip™



Step 3: Press START

• Study Results



PCT Con. (ng/mL)	Intra-assay			Inter-assay		
	Avg.	SD	CV%	Avg.	SD	CV%
0.1	0.12	0.00	3.87	0.12	0.01	6.78
2.0	2.00	0.05	2.58	2.01	0.03	1.47
100	99.15	1.48	1.49	99.80	0.94	0.94

AFIAS Parameters



Category	Item	AFIAS-1	AFIAS-6	Sample type	Working range
Cardiac	Tn-I Plus	●	●	WB/S/P	0.01-15 ng/mL
	CK-MB	●	●	WB/S/P	3-100 ng/mL
	D-Dimer	●	●	WB/P	50-10,000 ng/mL
	NT-proBNP	●	●	WB/S/P	10-30,000 pg/mL
	Myoglobin	●	●	WB/S/P	2-500 ng/mL
	Cardiac Triple	●	●	WB/S/P	Tn-I 0.01-15 ng/mL CK-MB 3-100 ng/mL Myoglobin 5-500 ng/mL
	ST2	●	●	WB/S/P	3.1-200 ng/mL
Cancer	PSA	●	●	WB/S/P	0.5-100.0 ng/mL
	PSA Plus	●	●	WB/S/P	0.07-50 ng/mL
	AFP	●	●	WB/S/P	5-350 ng/mL
	AFP Plus	●	●	WB/S/P	0.5-350 ng/mL
	CEA	●	●	S/P	1-500 ng/mL
	CEA Plus	●	●	WB/S/P	0.5-200 ng/mL
Diabetes	HbA1c	●	●	WB	(NGSP) 4-15 %
	Microalbumin	●	●	Urine	2-300 mg/L
Hormone	TSH	●	●	WB/S/P	0.09-80.0 μIU/mL (WB: 0.4-80.0 μIU/mL)
	TSH Plus	●	●	WB/S/P	0.1-50 μIU/mL
	T3	●	●	S/P	0.77-7.70 nmol/L
	T4	●	●	S/P	10.23-300.00 nmol/L
	FSH	●	●	WB/S/P	1-100 mIU/mL
	FSH Plus	●	●	WB/S/P	0.1-110 mIU/mL
	Total βhCG	●	●	WB/S/P	5-50,000 mIU/mL
	β-HCG Plus	●	●	WB/S/P	2-1,500 mIU/mL
	LH	●	●	WB/S/P	1-100 mIU/mL
	LH Plus	●	●	WB/S/P	0.1-100.0 mIU/mL
	PRL	●	●	WB/S/P	1-100 ng/mL
	PRL Plus	●	●	WB/S/P	0.5-200 ng/mL
	Testosterone	●	●	S/P	1-10 ng/mL
	Cortisol	●	●	WB/S/P	80-800 nmol/L
AMH	●	●	S/P	0.02-10 ng/mL	
Infection	CRP	●	●	WB/S/P	0.5-200 mg/L
	PCT	●	●	WB/S/P	0.1-100.0 ng/mL
	PCT Plus	●	●	WB/S/P	0.02- 50 ng/mL
	HBsAg	●	●	WB/S/P	0-300 COI
	Anti-HBs	●	●	WB/S/P	0-500 mIU/mL
	Anti-HCV	●	●	WB/S/P	0-300 COI
	ROTA	●	●	Feces	qualitative (0-200 COI)
	NORO	●	●	Feces	qualitative (0-200 COI)
	Rota/Adeno	●	●	Feces	qualitative (0-200 COI)
	Dengue IgG/IgM	●	●	WB/S/P	qualitative (0-200 COI)
	Dengue NS1 Ag	●	●	WB/S/P	qualitative (0-200 COI)
Others	Ferritin	●	●	S/P	10-1,000 ng/mL
	Vitamin D	●	●	S/P	8-70 ng/mL
	Anti-CCP Plus	●	●	WB/S/P	3.2-300 U/mL(Semi-quantitative)

* Coming soon